

MOOD • SLEEP QUALITY  
**THINK POSITIVE**  
 PREMENSTRUAL COMFORT

TOO MUCH STRESS?  
 FEEL OVERWHELMED?

**69%**  
 people more zen

NEED MORE  
 MOTIVATION?

**77%**  
 people more optimistic

LOOKING FOR A  
 QUICK ACTION?

**EFFICIENT**  
 in less than  
**2 WEEKS**

# Safr'inside™

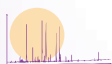
## SCIENCE Inside

**NEW**



PROPRIETARY  
**clinical results**

65 healthy adults, 30 mg/day, 56 days



PROPRIETARY  
**Published UHPLC method**

FULL CHARACTERIZATION



PUBLISHED CLINICAL EVIDENCE  
**Similar effects to Fluoxetine**



IDENTIFIED MECHANISMS  
**Multi-parametric action**

## CLAIMS Outside



100 % IRANIAN SAFFRON  
**Sargol quality**



SAFRANAL  
 CROCINS  
 DERIVATIVE COMPOUNDS

**Patented profile**  
 MORE THAN 25 COMPOUNDS



CHEMICAL PROFILE BACKED BY  
**10 clinical studies**

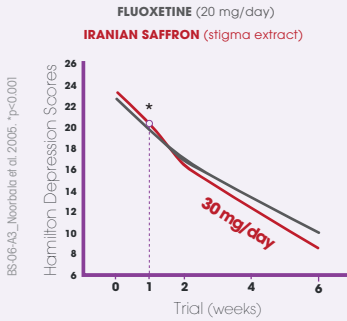


**Encapsulated Saffron**  
 PATENTED EXTRACTION PROCESS





## THE FLUOXETINE-like effect OF SAFFRON



Published clinical studies show that Iranian saffron extract, administered at **30 mg/day**, significantly relieves severe mood troubles, in **only 1 week**.

The saffron efficacy has been shown to be **similar to fluoxetine or imipramine**, the two main pharmaceutical drugs used to treat those disorders, **without any side effects**.



**SAFFRON**  
(*Crocus sativus* L.)

### SARGOL IRANIAN QUALITY

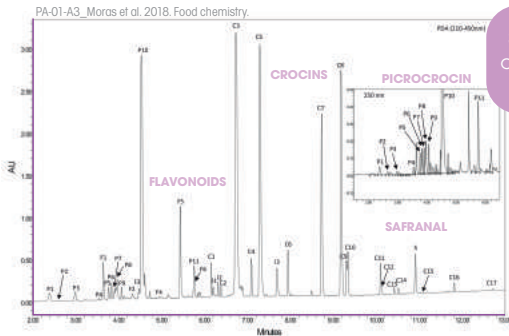
Only the purest and richest quality for Safr'Inside™.



### RICHEST EXTRACT

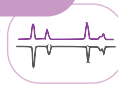
More than **25 compounds** identified by **proprietary published UHPLC method**.

**SAFRANAL • CROCINS • SAFROMOTIVINES**



Same chemical profile as Iranian saffron extracts clinically studied

### MIRROR EFFECT

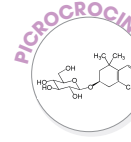
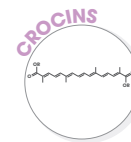
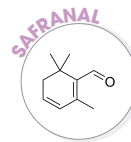


### THE ONLY ENCAPSULATED SAFFRON

**TECH' CARE EXTRACTION™**

Protects saffron volatile compounds from temperature variations & solvent alterations.

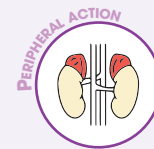
Preserves **native composition** of Iranian saffron and its natural richness in **Safromotivines**.



### A MULTI-PARAMETRIC ACTION



**BALANCE BRAIN NEUROTRANSMITTERS**  
(serotonin, GABA)



**CONTROL CORTISOL SECRETION**

### NEW CLINICAL RESULTS

### PROPRIETARY RESULTS

Open study - after only 15 days of supplementation:

ON 50 HEALTHY ADULTS  
30 MG/DAY

**3/4**  
People feel their emotional balance improved

**4/5**  
consumers satisfied by Safr'Inside™ effectiveness

ON 65 HEALTHY ADULTS  
30 MG/DAY

CLINICAL STUDY - after 56 days of supplementation:  
**Significant improvement of quality of life VS placebo**

ONLY **30 mg / day**

for **MOOD • SLEEP QUALITY • PREMENSTRUAL COMFORT**



CAPSULE TABLET SOFTGEL INSTANT DRINK

- No Dyes
- No synthetic Safranal
- DNA Tested
- Nano-particles free
- Allergen Gluten free
- GMO free
- Irradiation free
- FSSC 22000
- Made In France
- Vegan
- Organic
- GRAS
- KOSHER
- HALAL



formore@activinside.com  
www.safrinside.com



Science inside,  
claims outside



Bordeaux Area  
FRANCE

-V05 - April 2019 - BR-01-A3. © Activ'Inside - © Credit: Fotolia. Products are not intended to diagnose, treat, cure or prevent any disease. The given information has not been evaluated by any authority and has to be validated by the buyer according national laws and/or local regulations in force. For nutritional business & professionals only.